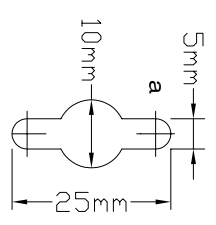
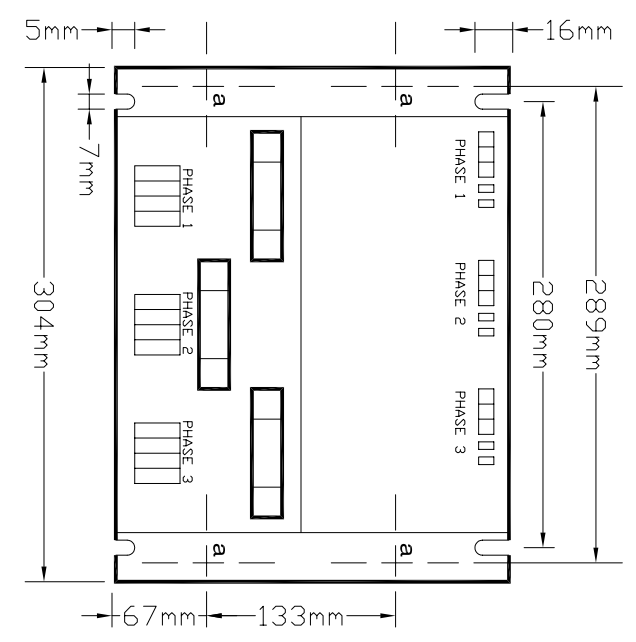
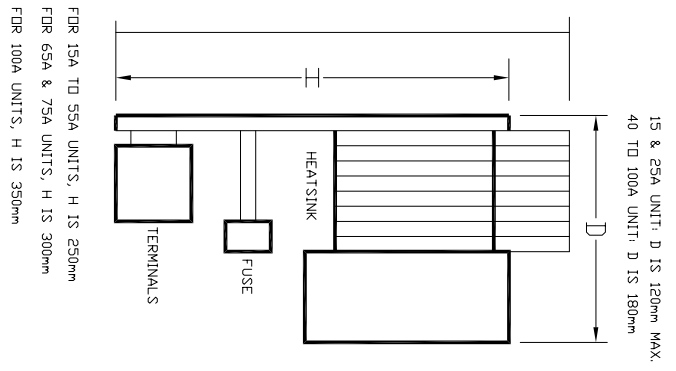


DIMENSIONS OF PCS35 & PCS37, UP TO 100A UNITS
 (FOR NATURAL COOLING) ** a : 4 OFF-TAKE HOLES



Air flow axis
 →

NOTE:
 FDR 15A TO 55A UNITS, H IS 250mm
 FDR 65A & 75A UNITS, H IS 300mm
 FDR 100A UNITS, H IS 350mm

ALL HEAVY CURRENT CONNECTION ARE VIA DIN RAIL CONNECTORS

POWERLINK ELECTRONICS LTD.

ISSUE	AMENDMENT	MADE BY	DATE	DESIGNED BY	DATE	CLIENT	TITLE
				DRAWN BY	JULY 2002		DIMENSIONS OF PCS35 & PCS37 UP TO 100A UNITS
				CHECKED BY		PROJECT No:	
				APPROVED BY			
				SCALE:		SHEET :	
						A3	DRAWING No: CD60537G
							R